

WOW!
22



At Wakkanai Park,
remember those repatriated
from Karafuto (Sakhalin)
at the end of the war.

The "Hyosetsu Gate" cenotaph to the Karafuto islanders



This park, set on a high plateau, offers not only a lovely ocean view but also hosts Hyosetsu Gate and the 9 Maidens Monument by sculptor Shin Hongo, a monument to the Sakhalin Huskies who helped in Antarctic exploration, and the Tanka no Michi. Get closer to history in national border-town Wakkanai.

■ Wakkanai Park

ACCESS

Approx. 10 min. by car from JR Wakkanai Station
(Road closed between Nov. and Apr.)

MAP p. 45/47



Antarctic Exploration Sakhalin Husky-Training Memorial Monument



Tanka no Michi Poetry Path

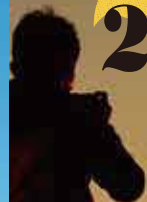


The 9 Maidens Monument



Nostalgic Karafuto

WOW!
23



Let the dazzling sunsets
move you.

With Rishirifuji and Rebun Island straight ahead and Cape Soya to the right, Cape Noshappu is one of the city's leading scenic spots. If you want to take a photo of the famous dolphin monument, its silhouette at sunset is recommended.

■ Cape Noshappu

ACCESS

· Approx. 10 min by car from JR Wakkanai Sta.
· Approx. 5-min. walk from the "Noshappu" bus stop, which is approx. 10 min. by bus (Shinai route) from JR Wakkanai Sta.

MAP p.45

